



Minnesota Offices - 16 Locations

APPLE VALLEY

14994 Glazier Avenue
Apple Valley, Minnesota 55124-7498
Phone (952) 997-5625 • Fax (952) 432-6844
MSA/MD Mpls., St. Paul – Bloomington 33460
Dakota County 037
Census Tract 0608.24 – Middle

Lobby Hours:

9:00 A.M. to 5 P.M. Monday through Friday

Drive-through Hours:

9 A.M. to 5 P.M. Monday through Friday
9 A.M. to NOON Saturday
24-Hour ATM

BLOOMINGTON

7825 Washington Ave S, Suite 120
Bloomington, Minnesota 55439
Phone (952) 698-6274 • Fax (952) 941-7259
MSA/MD Mpls., St. Paul – Bloomington 33460
Hennepin County 053
Census Tract 0259.05 – Upper

Lobby Hours:

By Appointment Only

ATM Hours:

6:00 A.M. to 6 P.M. Monday through Friday
8:00 A.M. to 2 P.M. Saturday

BUFFALO

305 10th Avenue South
Buffalo, Minnesota 55313-2302
Phone (763) 682-3035 • Fax (763) 682-3025
MSA/MD Mpls., St. Paul – Bloomington 33460
Wright County 171
Census Tract 1007.04 – Middle

Lobby Hours:

9 A.M. to 5 P.M. Monday through Friday

Drive-through Hours:

9 A.M. to 5 P.M. Monday through Friday
9 A.M. to NOON Saturday
24-Hour ATM

GLENCOE

1002 Greeley Avenue North
Glencoe, Minnesota 55336-2128
Phone (320) 864-5541 • Fax (320) 864-5954
Out of MSA/MD
McLeod County 085
Census Tract 9507.00 – Middle

Lobby Hours:

9 A.M. to 5 P.M. Monday through Friday

Drive-through Hours:

9 A.M. to 5 P.M. Monday through Friday
9 A.M. to NOON Saturday
24-Hour ATM

HASTINGS

1320 South Frontage Road
Hastings, Minnesota 55033-2481
Phone (651) 437-6169 • Fax (651) 438-3583
MSA/MD Mpls., St. Paul – Bloomington 33460
Dakota County 037
Census Tract 0611.06 – Middle

Lobby Hours:

9 A.M. to 5 P.M. Monday through Friday

Drive-through Hours:

9 A.M. to 5:00 P.M. Monday through Friday
9 A.M. to NOON Saturday
24-Hour ATM

**HUTCHINSON DOWNTOWN**

201 Main Street South
Hutchinson, Minnesota 55350-2573
Phone (320) 234-4500 • Fax (320) 234-4500
Out of MSA/MD
McLeod County 085
Census Tract 9503.01 – Middle

Lobby Hours:

9 A.M. to 5 P.M. Monday through Friday

Drive-through Hours:

8 A.M. to 5 P.M. Monday through Friday
9 A.M. to NOON Saturday
24-Hour ATM

INVER GROVE HEIGHTS

6505 Cahill Avenue East
Inver Grove Heights, Minnesota 55076-2022
Phone (651) 455-1553 • Fax (651) 455-1554
MSA/MD Mpls., St. Paul – Bloomington 33460
Dakota County 037
Census Tract 0605.06 – Middle

Lobby Hours:

9 A.M. to 5 P.M. Monday through Friday

Drive-through Hours:

9 A.M. to 5 P.M. Monday through Friday
9 A.M. to NOON Saturday
24-Hour ATM

LITCHFIELD

501 North Sibley Avenue
Litchfield, Minnesota 55355-1754
Phone (320) 693-2861 • Fax (320) 693-2948
Out of MSA/MD
Meeker County 093
Census Tract 5604.00 – Middle

Lobby Hours:

9 A.M. to 5 P.M. Monday through Friday

Drive-through Hours:

9:00 A.M. to 5 P.M. Monday through Friday
9 A.M. to NOON Saturday
24-Hour ATM

LONG LAKE

1964 W Wayzata Blvd
Long Lake, Minnesota 55356
Phone (952) 473-7347 • Fax (952) 473-0282
MSA/MD Mpls., St. Paul – Bloomington 33460
Hennepin County 053
Census Tract 0272.02 – Middle

Lobby Hours:

8 A.M. to 4 P.M. Monday through Friday

Drive-through Hours:

8:00 A.M. to 5 P.M. Monday through Friday
9 A.M. to NOON Saturday
24-Hour ATM

MINNETONKA

14617 Hwy. 7 (at Williston Rd.)
Minnetonka, Minnesota 55345-3706
Phone (952) 931-2200 • Fax (952) 931-2206
MSA/MD Mpls., St. Paul – Bloomington 33460
Hennepin County 053
Census Tract 0262.06 – Upper

Lobby Hours:

9 A.M. to 5 P.M. Monday through Friday

Drive-through Hours:

9 A.M. to 5 P.M. Monday through Friday
9 A.M. to NOON Saturday
24-Hour ATM

SANBORN

100 S Main St
Sanborn, Minnesota 56083
Phone (507) 900-5757 • Toll Free 1(877) 874-7376
Out of MSA/MD
Redwood County 127
Census Tract 7506.00 - Middle

Lobby Hours:

9:00 A.M. to 3:00 P.M. Monday through Wednesday,
and Friday
9:00 A.M. to 4:30 P.M. THURSDAY

Drive-through Hours:

8:30 A.M. to 4:00 P.M. Monday through Wednesday,
and Friday
8:30 A.M. to 4:30 P.M. THURSDAY

**SPRINGFIELD**

2 S Marshall Ave
Springfield, Minnesota 56087
Phone (507) 723-7300 • Toll Free 1(877) 874-7376
Out of MSA/MD
Brown County 015
Census Tract 9606.00 - Middle

Lobby Hours:

9:00 A.M. to 4:00 P.M. Monday through Friday

Drive-through Hours:

8:30 A.M. to 4:00 P.M. Monday through Friday
24-Hour ATM

ST. CLOUD

1113 W. St. Germain St.
St. Cloud, Minnesota 56301-3458
Phone (320) 529-8878 • Fax (320) 529-9099
MSA/MD St. Cloud 41060
Stearns County 145
Census Tract 0116.00 – Unknown

Lobby Hours:

9:00 A.M. to 5:00 P.M. Monday through Friday

Drive-through Hours:

9 A.M. to 5:00 P.M. Monday through Friday
9 A.M. to NOON Saturday
24-Hour ATM

WACONIA

200 East Frontage Road
Waconia, Minnesota 55387-0287
Phone (952) 442-2141 • Fax (952) 442-2332
MSA/MD Mpls., St. Paul – Bloomington 33460
Carver County 019
Census Tract 0903.02 – Middle

Lobby Hours:

9 A.M. to 5 P.M. Monday through Friday

Drive-through Hours:

9 A.M. to 5 P.M. Monday through Friday
9 A.M. to NOON Saturday
24-Hour ATM

WHITE BEAR LAKE

1310 East Highway 96, Suite 116

White Bear Lake, MN 55110-9998
Phone (651) 766-7020
MSA/MD Mpls., St. Paul – Bloomington 33460
Ramsey County 123
Census Tract 0405.03 – Middle

Lobby Hours:

By Appointment Only
NOON to 4 P.M. Monday through Friday

ATM Hours:

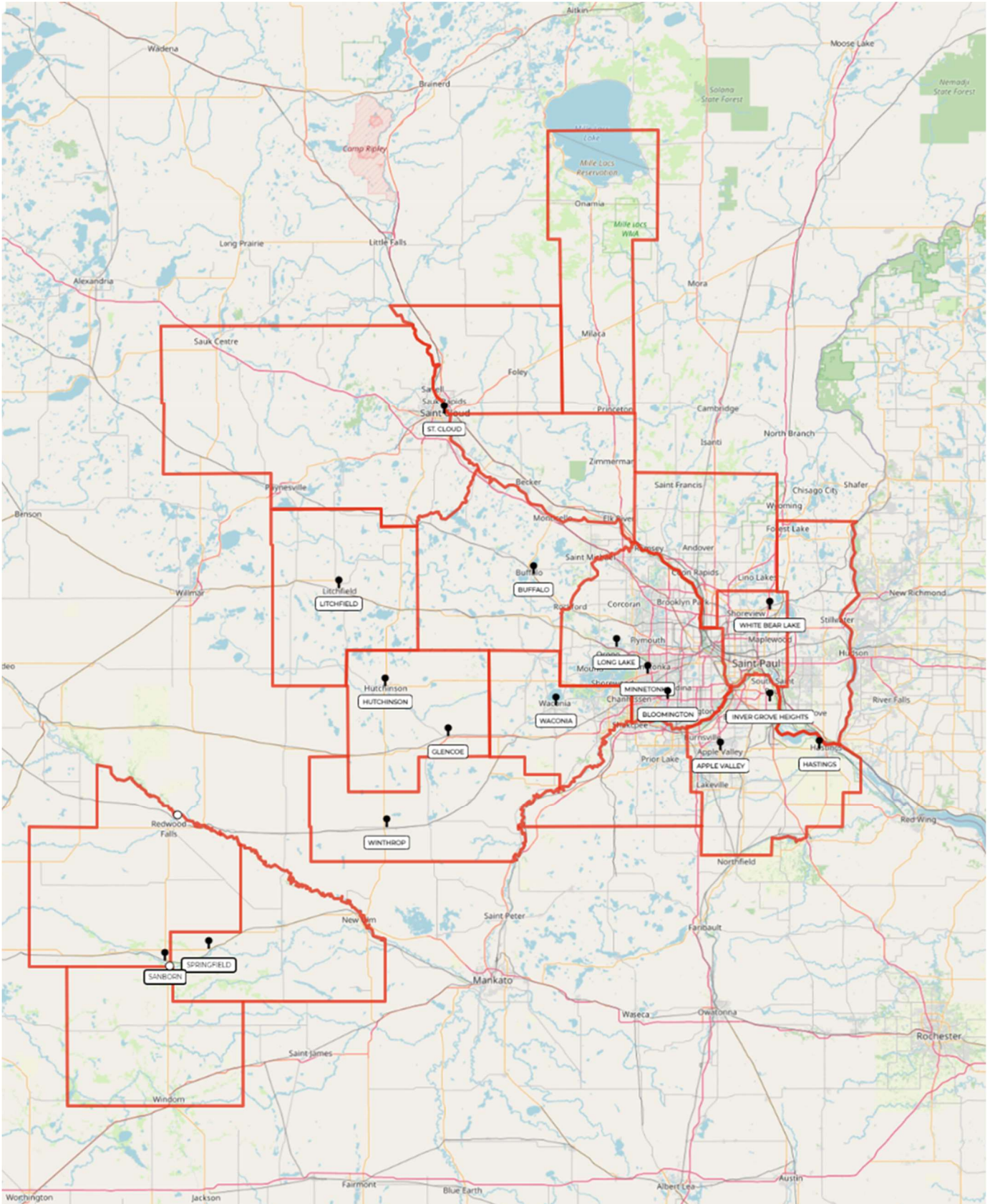
6:30 A.M. to 8 P.M. Monday through Friday
6:30 A.M. to 4 P.M. Saturday

WINTHROP

122 East Second Street
Winthrop, Minnesota 55396-0424
Phone (507) 788-0943 • Fax (507) 788-0943
Out of MSA/MD
Sibley County 143
Census Tract 1702.00 - Middle

Lobby Hours:

9:00 A.M. to 4 P.M. Monday through Thursday
9:00 A.M. to 5 P.M. Friday



Reviewed 3/31/25

